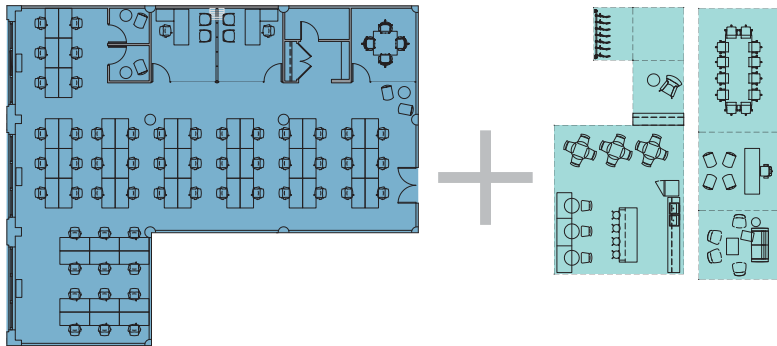


the swivel story

conventional
suite layout

SEATS 56 PEOPLE

private amenities requiring
additional RSF



5,677 RSF x \$110 PSF + 1,695 RSF x \$110 PSF

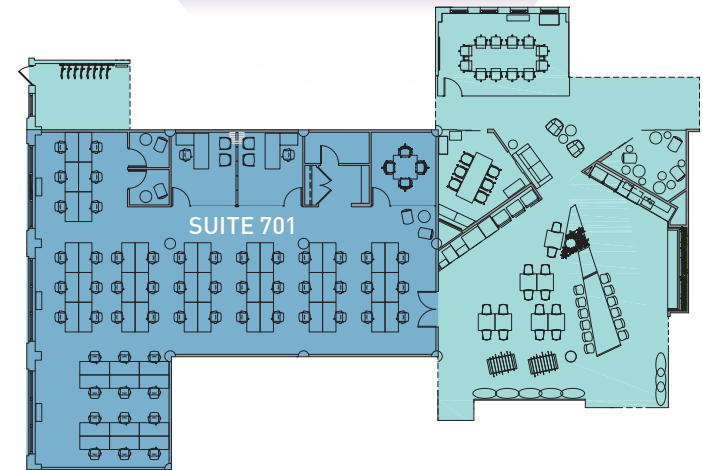
7,372 RSF = \$810,920 annual rent

\$14,481 in annual rent per employee

swivel
suite layout

SEATS 56 PEOPLE

multiple communal
amenities included



5,677 RSF x \$110 PSF + 3,948 RSF x \$0 PSF

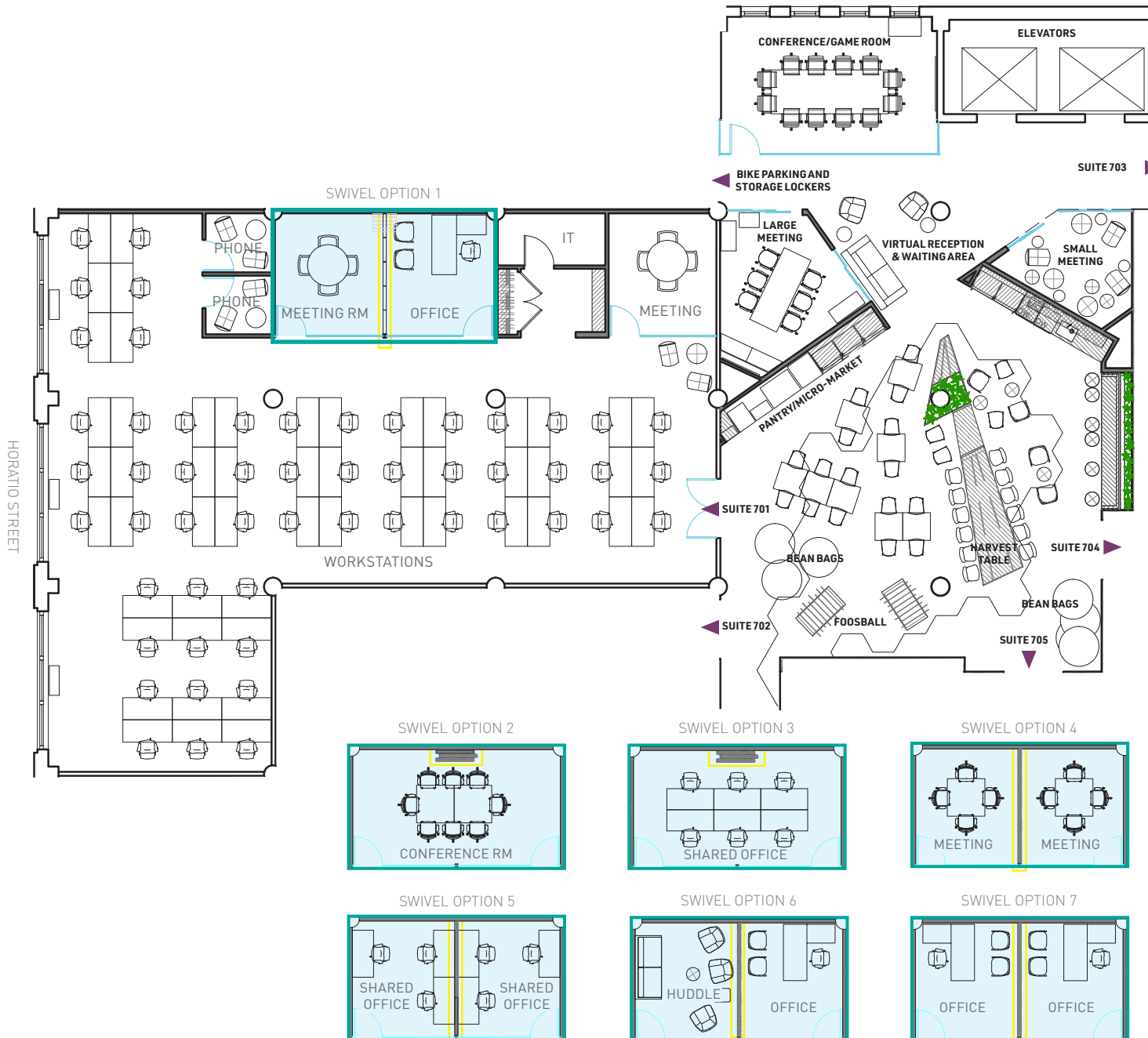
5,677 RSF = \$624,470 annual rent

\$11,151 in annual rent per employee

swivel savings: **\$186,450 ANNUALLY / \$15,538 MONTHLY**

swivel equivalent: **\$85 PSF**

PSF rent to be achieved on a conventional suite to maintain equivalent annual rent of \$624,470. Effective 23% discount from conventional asking rent.



SUITE 701

Office	1
Workstations	54
TOTAL HEADCOUNT	55
Meeting Room/Offices	2
Phone Rooms	2

COMMUNAL AMENITIES

Conference/Game Room	12 people
Large Meeting Room	11 people
Small Meeting Room	7 people
Virtual Reception	
Pantry/Micro-Market	
Lounge	
Bike Parking/Storage Lockers	

Swivel Wall: a dynamic collapsable wall that transforms the space allowing for flexibility

Flexibility: 7 Swivel Wall configurations

Furniture: communal amenities are fully furnished, private suites will be delivered unfurnished

For leasing information contact:
Michael I. Lenchner
 VP & Director of Leasing
 212.755.5151
 mlenchner@sagerealty.com

swivel

a new spin on workspace

2 GANSEVOORT | 7th FLOOR



COMMUNAL AMENITIES

Conference/Game Room	12 people
Large Meeting Room	11 people
Small Meeting Room	7 people
Virtual Reception	
Pantry/Micro-Market	
Lounge	
Bike Parking/Storage Lockers	

Swivel Wall: a dynamic rotating wall that transforms the space allowing for flexibility

Furniture: communal amenities are fully furnished, private suites will be delivered unfurnished

SUITE 701	5,677 RSF
Office	1
Workstations	54
TOTAL HEADCOUNT	55
Meeting Rooms/Offices	2
Phone Rooms	2

SUITE 705	4,816 RSF
Office	1
Workstations	50
TOTAL HEADCOUNT	51
Meeting Room/Office	1
Phone Room	1

For leasing information contact:

Michael I. Lenchner

VP & Director of Leasing

212.755.5151

milenchner@sagerealty.com



August 2018