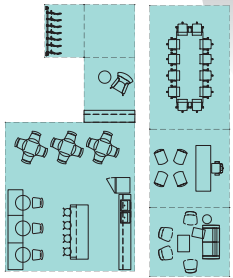


the swivel story

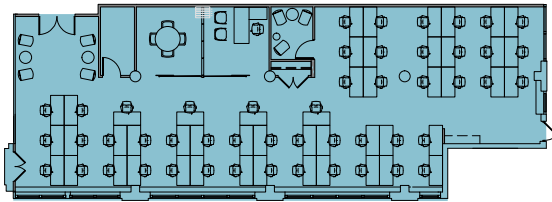
conventional
suite layout

SEATS 52 PEOPLE

private amenities requiring
additional RSF



+



1,438 RSF x \$110 PSF + 4,816 RSF x \$110 PSF

6,254 RSF = \$687,940 annual rent

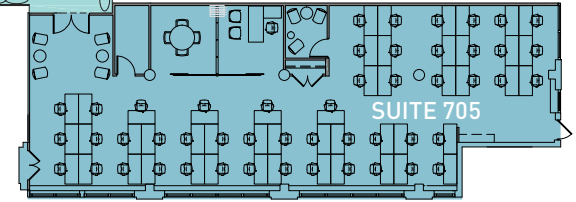
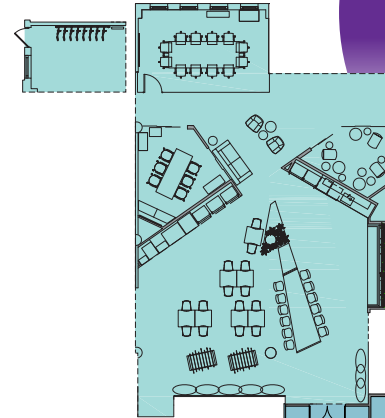
\$13,230 in annual rent per employee

VS

swivel
suite layout

SEATS 52 PEOPLE

multiple communal
amenities included



3,948 RSF x \$0 PSF + 4,816 RSF x \$110 PSF

4,816 RSF = \$529,760 annual rent

\$10,188 in annual rent per employee

swivel savings: **\$158,180 ANNUALLY / \$13,182 MONTHLY**

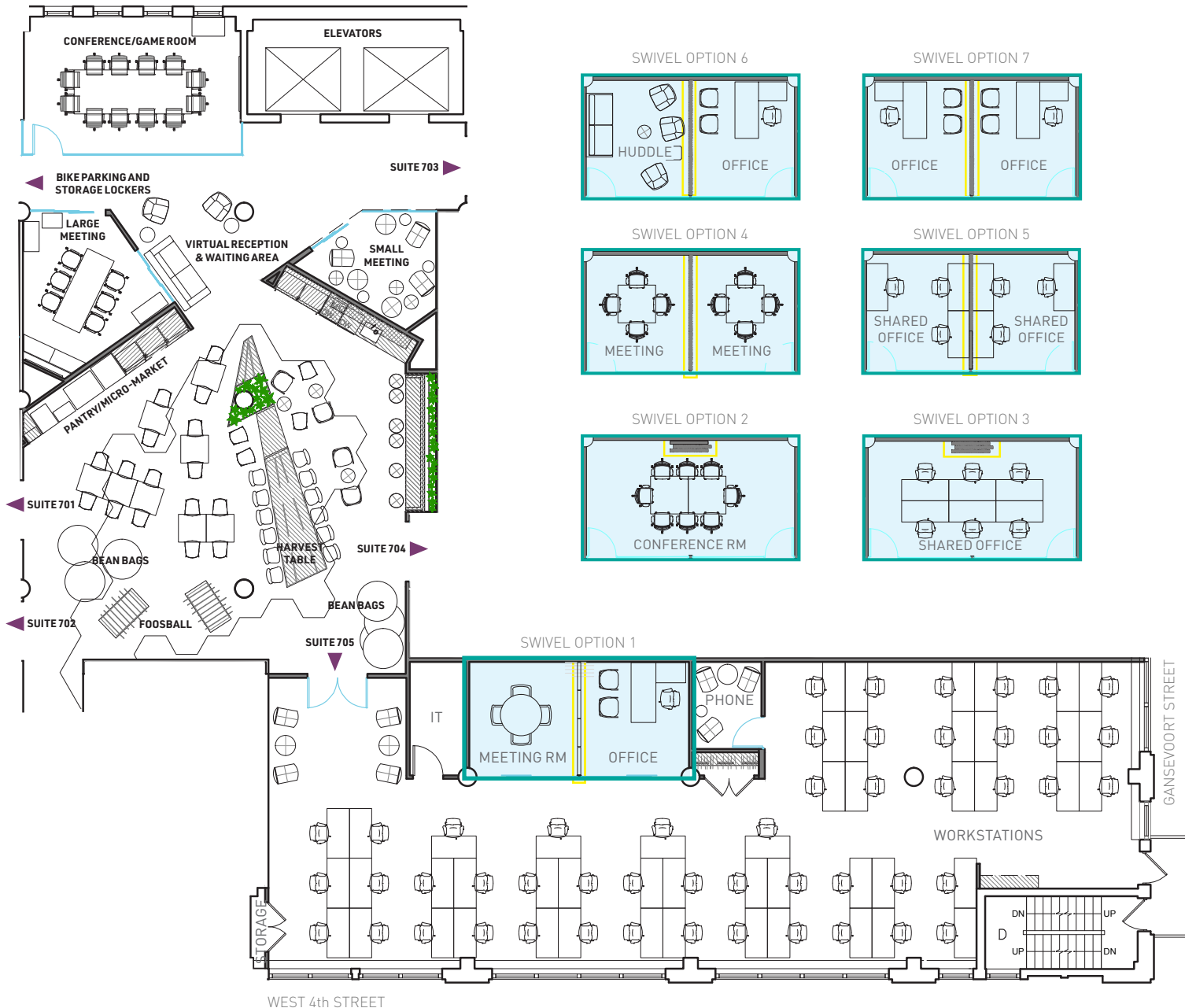
swivel equivalent: **\$85 PSF**

PSF rent to be achieved on a conventional suite to maintain equivalent annual rent of \$529,760. Effective 23% discount from conventional asking rent.

swivel

a new spin on workspace

SUITE 705 | 4,816 RSF



SUITE 705

Office	1
Workstations	50
TOTAL HEADCOUNT	51
Meeting Room/Office	1
Phone Room	1

COMMUNAL AMENITIES

Conference/Game Room	12 people
Large Meeting Room	11 people
Small Meeting Room	7 people
Virtual Reception	
Pantry/Micro-Market	
Lounge	
Bike Parking/Storage Lockers	

Swivel Wall: a dynamic collapsable wall that transforms the space allowing for flexibility

Flexibility: 7 Swivel Wall configurations

Furniture: communal amenities are fully furnished, private suites will be delivered unfurnished

For leasing information contact:
Michael I. Lenchner
 VP & Director of Leasing
 212.755.5151
 mlenchner@sagerealty.com



swivel

a new spin on workspace

2 GANSEVOORT | 7th FLOOR



COMMUNAL AMENITIES

Conference/Game Room	12 people
Large Meeting Room	11 people
Small Meeting Room	7 people
Virtual Reception	
Pantry/Micro-Market	
Lounge	
Bike Parking/Storage Lockers	

Swivel Wall: a dynamic rotating wall that transforms the space allowing for flexibility

Furniture: communal amenities are fully furnished, private suites will be delivered unfurnished

SUITE 701	5,677 RSF
Office	1
Workstations	54
TOTAL HEADCOUNT	55
Meeting Rooms/Offices	2
Phone Rooms	2

SUITE 705	4,816 RSF
Office	1
Workstations	50
TOTAL HEADCOUNT	51
Meeting Room/Office	1
Phone Room	1

For leasing information contact:

Michael I. Lenchner

VP & Director of Leasing

212.755.5151

milenchner@sagerealty.com

